

ROAD INDEX

A	I	R	ROCK CREEK RD. A1
J	JOANN DRIVE C-3		
B	BURROWS RD. BI-FI	K	KILE ROAD A2-A6
		S	SUN ROAD D5
C	CLAY STREET BI-C6	L	LEGGETT RD. BI-F2
		T	
D	DEWEY ROAD CI	M	MADISON RD. DI-D6
		M	MORGAN RD. FI-F3
		F	MURPHY RD. FI
		U	
E			
		V	
		N	
F			
		W	WHITNEY RD. D5-F5
			WOODHILL DR. BI
G	G.A.R. HIGHWAY A4-F4		
		X	
		P	PLANK ROAD BI-F6
		Y	
		Z	

① LEDGEMONT SCHOOL
 ② COMMUNITY CHURCH
 ③ MONTVILLE METHODIST CHURCH
 ④ MONTVILLE CEMETERY
 ⑤ MONTVILLE VOL. FIRE DEPT.
 ⑥ UNITED STATES POST OFFICE
 ⑦ MONTVILLE TOWN HALL
 ⑧ STATE HIGHWAY GARAGE (SUB STATION)
 ⑨ MONTVILLE COMMUNITY CENTER

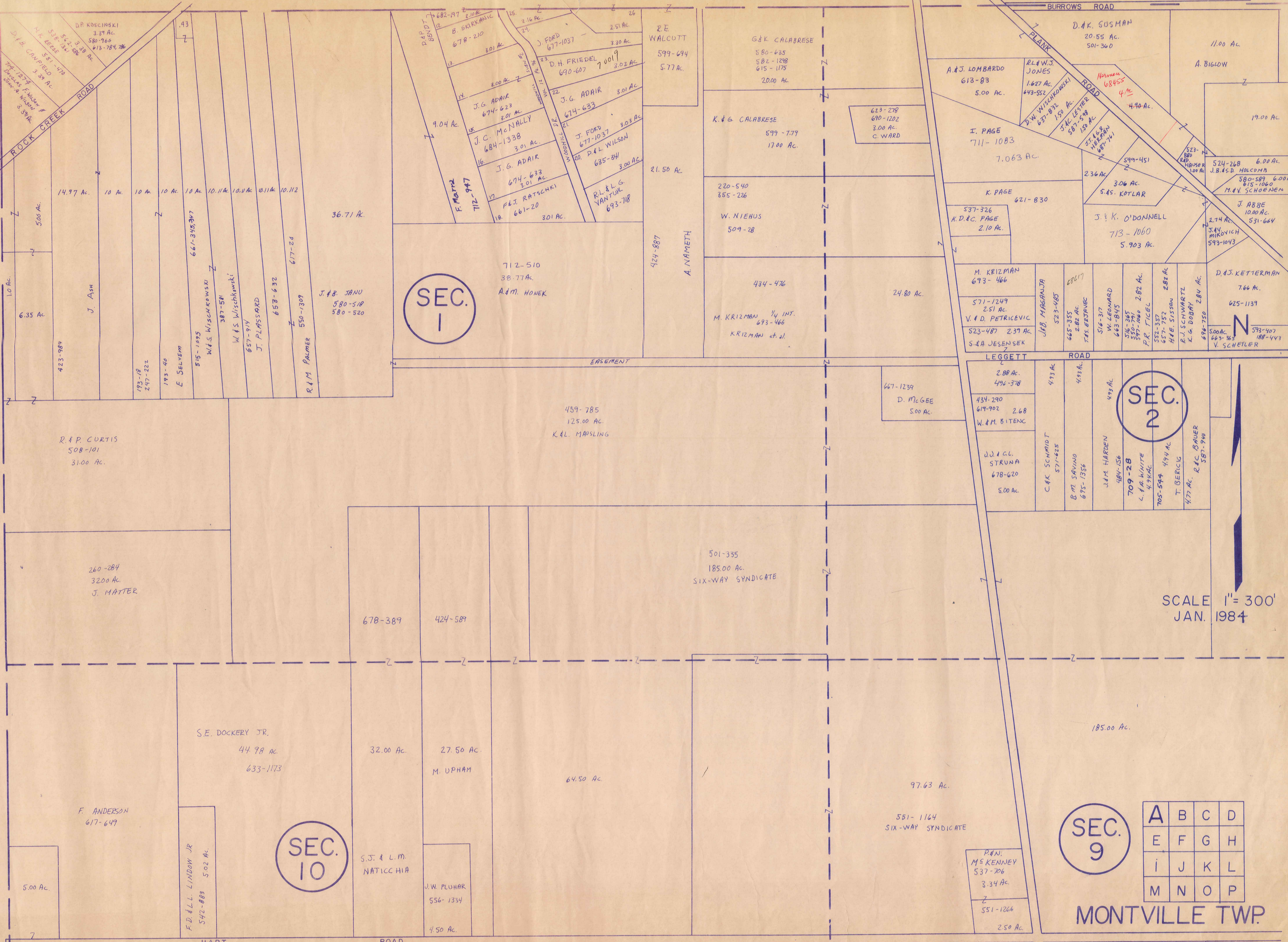
MONTVILLE TOWNSHIP

SCALE: 1" = 2000'
 ROBERTE PHILLIPS,
 GEALGA COUNTY ENGINEER

--- UNPAVED ROADS
 --- PAVED ROADS
 --- TOWNSHIP LINE
 --- COUNTY LINE

THOMPSON TOWNSHIP

HAMBDEN TOWNSHIP



SCALE 1" = 300'
JAN. 1984

A	B	C	D
E	F	G	H
I	J	K	L
M	N	O	P

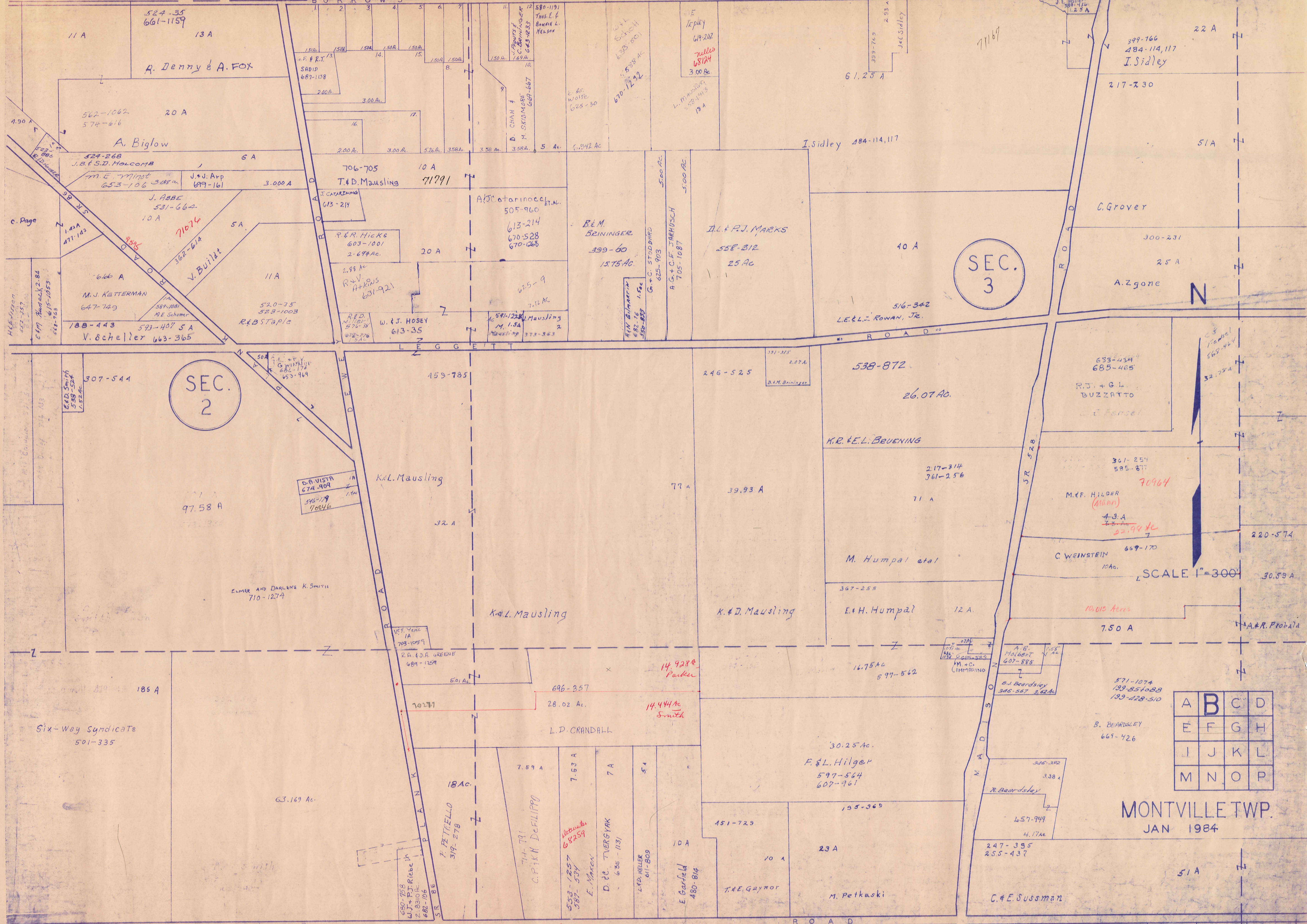
SEC. 9

MONTVILLE TWP.

SEE MAP

B

T H O M P S O N T O W N S H I P



SEC. 2

SEC. 3

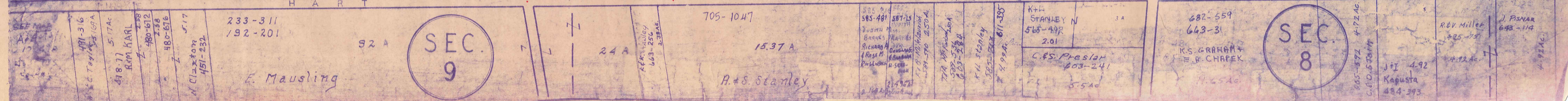
SEC. 9

SEC. 8

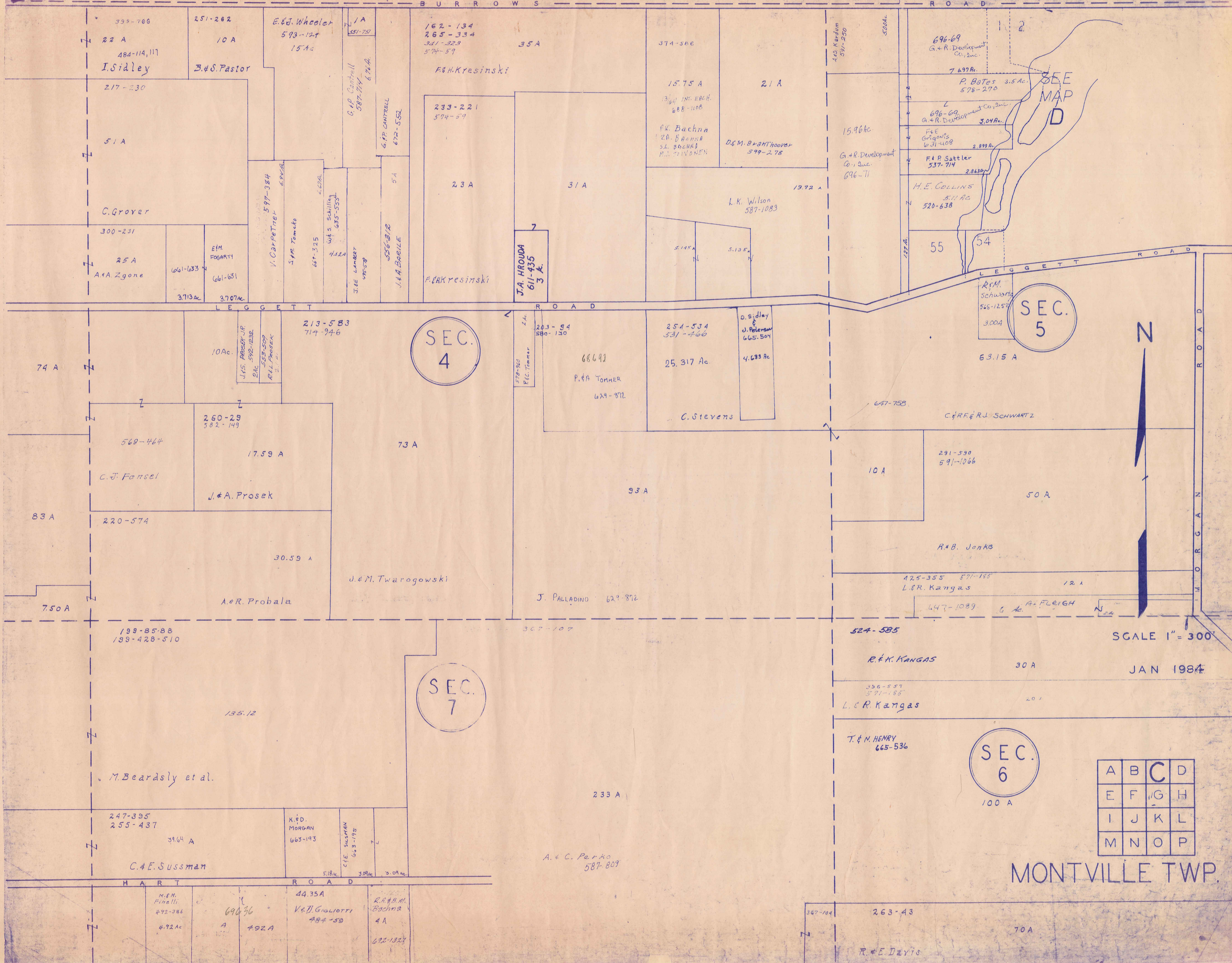
A	B	C	D
E	F	G	H
I	J	K	L
M	N	O	P

MONTVILLE TWP. JAN 1984

SCALE 1"=300'



T H O M P S O N T O W N S H I P



SEC. 4

SEC. 5

SEC. 7

SEC. 6

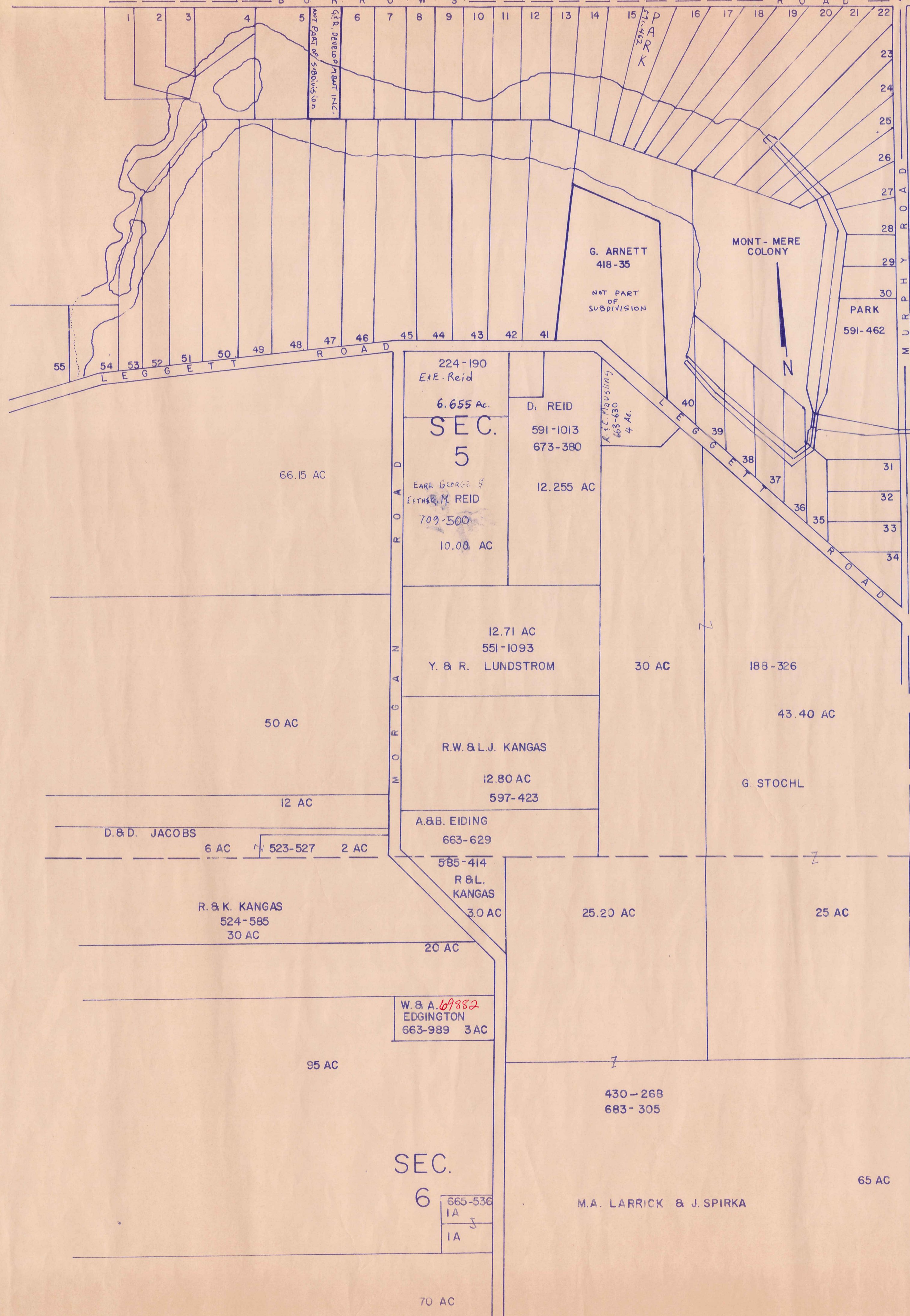
A	B	C	D
E	F	G	H
I	J	K	L
M	N	O	P

SCALE 1" = 300'

JAN 1984

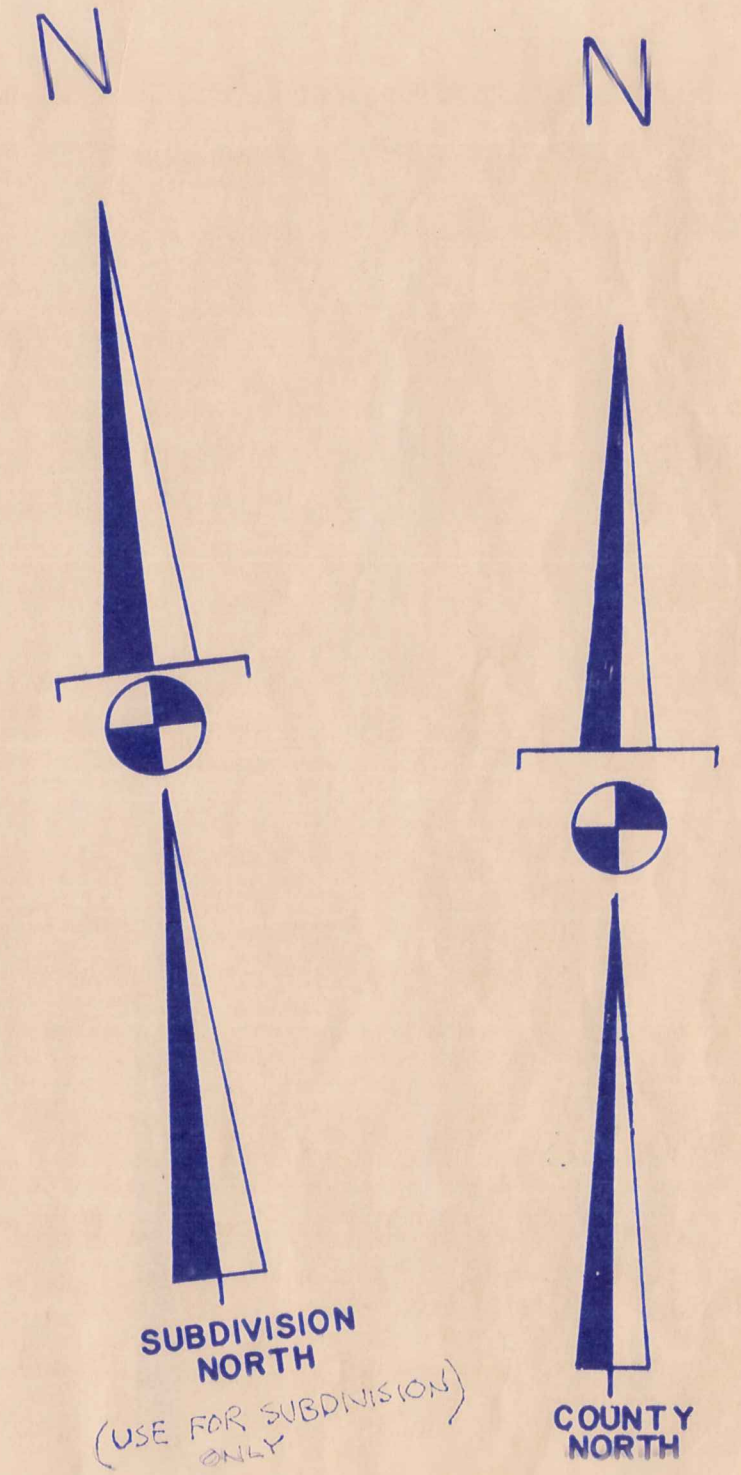
MONTVILLE TWP.

T H I L O M P S O N T O W N S H I P



MONT-MERE COLONY
SUBDIVISION ONE - Vol. 9 - Pg. 96

1	J.H. MURRAY	667-343
2	H.R. RAYMOND	558-1007
3	M.B. HUTTING	605-842
4	G.E. SUBACK	568-1020
5	R.S. HANKS	700-875
6	J.W. TEUFEROW	545-692
7	R.B. TEUFEROW	421-242
8	E.D. VANSICKEL	538-975
9	J.F. CUONIGER	576-668
10	S.C. LIPKA	617-347
11	C.C. LIPKA	528-1041
12	L.L. SURIANO	431-233
13	J.S. VYSNIOVIC	633-360
14	J.W. SCALIER	552-817
15	WILLIAM J. JOHNSON	552-776
16	A. GOLDKOWSKI	633-825
17	A.B. UMBEL	587-1059
18	J. JELONIC	653-601
19	G.E. GRODLE	580-897
20	T.V. BOHNE, Trustee	703-1387
21	R.S. AMMOND	697-1337
22	L.W. HICKMAN	707-580
23	R.D. CONKLIN	565-302
24	T.D. BRUNINGER	552-32
25	G. MORZEGHOSKI	633-1037
26	J.H. AMMOND	698-1078
27	R.E. SIKORA	603-1466
28	J.P. STEPANEC	576-277
29	D. KINGSLAND	676-611
30	A.J.M. ANDRYS	643-914
31	J.C. Geomataky	582-498
32	R. HAUSER Eye Co.	550-780
33	E.H. PAJOKAS	647-367
34	E.H. PAJOKAS	647-367
35	R.E. BRANDT	625-123
36	J.F. KIGAVSKAS	633-877
37	M.A. KIGAVSKAS	633-413
38	Steve Popper	597-429
39		
40		
41		
42	D.E. FERATO	538-1009
43	R.S.M. KNOP	597-342
44	H.W. BARAKS	593-1205
45	D. TROSTER	609-379
46	" "	" "
47	" "	" "
48	T. + L. WILT	706-144
49	J.P. ORRIEU	688-588
50	P.B. Drees	571-1027
51	R.R. NICHOLS	609-295
52	D.E. Jones	578-1298
53	R.B. Temple	589-1086
54	T.A. PETERSON	647-293
55	E.O. SALVATIS	588-128
56	L.P. Wiskes	621-1047



SCALE: 1" = 300'
JAN. 1, 1984

A	B	C	D
E	F	G	H
I	J	K	L
M	N	O	P

H A M B D E N T O W N S H I P

281-74
300-151
25.08 A
W. Pastula
532-485
C.L. J. White 19-928
500 Ac.
W. PARREN HOLE
516-339
5,000 Ac.
R.F.C. Mihalik
512-834
5,000 Ac. 68577
J. LANGE
571-291 5,000 Ac.

451-940

SEC. 10

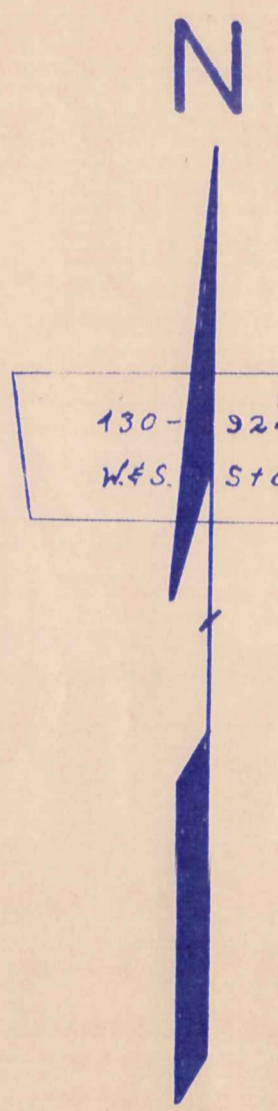
SEC. 9

270-478
463-935
L. HOFSTETTLER
9.3 Ac

533-939
4411 STATION
517C
528-1080
W. WHEATMAN
512 AC

M.H.K. Roth
H. & J. Roth
587-951 37.58 Ac.

R. B. Townsend



SCALE 1" = 300'

J. RIES
30.12 Ac.
312-444

260-469

100 A

H. Flippi

452-1016
25 A
25.16 A
C. Homeier

R. B. Townsend

37.75 A
W.F.C. Frank
486-919

683-1324
4,003 A
R.V. S.L. DEWEY

532-488
W.M.
MELARAGNO
2.5A

21.71 A
J. J. NINGARD JR.
611-1276

285-577
578-323

K. Townsend
603-90
11.02 A

J.E.C. NAGY 546-377
715-1834 KEVIN R. & KATHLEEN J. LYONS 4.40 A
409-9 M. Tripodo 4.40 A
205-115 S. Tripodo 4.39 A

8.78 A
M. Yaromey

515-736
JOHN HILLINGER
38,184 A.

C.S. Heath
601-571
603-1035

263-11
A. E. Schley 5 A
523-948
5.73 Ac.

Grid with letters A-P

A	B	C	D
E	F	G	H
I	J	K	L
M	N	O	P

G. DAVIS
619-90

396-338 8.79 A
F. Metzger (son Miller)

8.75 A
A. M. Iannica

43.77 A

57.66 A

46 A

MONTVILLE TWP.
JAN 1984

J. & M. KORTIS 8.73 A
593-1045

8.72 A

SEC. 11

G.F. Davis
589-923

SEC. 12

699-285
M. C. Knowlton

6.94 A
J. McLean
648 A
E.C. SACHS
597-1181
L.F. NELSON
4125-434
W. Thompson
578-21
E.D. WASTE
673-688

515-736
JOHN HILLINGER
38,184 A.

C.S. Heath
601-571
603-1035

G.F. Davis
589-923

218-117

28.07 A

678-457 188A
FG DYNER
611-482
C. BRECK
601-484
C.B. P. K.

220-614
R.F.L. MILLER
3 Ac
677-988

Job-1124
64579
7309 3Ac

277-678
A & L Gincas
47 A

224-248

WIP HOBERT
671-563
7,500
428-842
HIL McCORMY

424-902
582-692
E.M. Weight
20 Ac.

H.M. Boesger Jr.
601-712
14.20 A

254-115 3.92 A
R.A.L. Craxton
316-34B

72.70 A
A. J. Miller

J. & N. WINTERS
611-550

E. LEWANSKI

R. Turner

E. Di Donato

G. Eyring
591-1200
12.744

665-1111
D. ROPP
39.42 A

R. C. Bernardelli

592-188
D.A.
WATKINSON

6.26 A

263-43

SEC. 6

220-374

M. A. LARRICK + J. Spirka

65 A

70 A

R. E. Davis

35 A

J.D. Calandine 631-1278 679-5

34 A.

270-465 582-84

G.P. Heller

418-993

50 A

G. Brown

11.44 A

H. Pierman 617-921 2.58 Ac.

617-166

55.81 Ac.

H. Pierman

H.D. & M.W. STOLTZ 694-160 694-158 6.26 Ac.

5A 469-778 J & A Majka

99 A

Joe Sirkovec 574-624

11.3 Ac.

613-224

W. Pluta 706-598

574-622

22.34 Ac.

663-704 469-728 J & L Mascarella

469-440 1-0-33 A J & L Mascarella

480-397 2 A B & D Tshman

53-658 W. Schwartz 220-288 et al.

127-70

1.35 A

31.27 A

33 A

J. Trask et al.

M. B. Cuijanovic 589-170

544-367

23.8 Ac.

C. NELSON

393-1012

61.76 A

P. Berardinelli

SEC. 15

12 A

50 A

W. MAUSING

312-457-B 637-959

367-417 382-543

29.71 A

S. Zadnik

O. Lozok & R. Kowalik 444-593 595 572-597

234-318

237-455 W. J. Dombrowski

43 A

15 A

15 A

15 A

D.L. STEFANSKY 692-758 I. Bosse

152-488 K. K. Kiparski

M. Lankford

434-555

38.75 A

20 A

3.25 A

206-442

ANNA Marie + Joseph Majka 11/183 25.1926 Ac. 693-99

Josephine Anne + Harold Edward Hertina 11/4/83

T. B. HEPTNA 3.03 Ac.

G. E. M. Trask

463-269 574-857 601-372 617-1252

48.44 A

10 A

L. B. PNIENSKI

431-607

40 A

671-1104

A S H T A B U L L A C O U N T Y



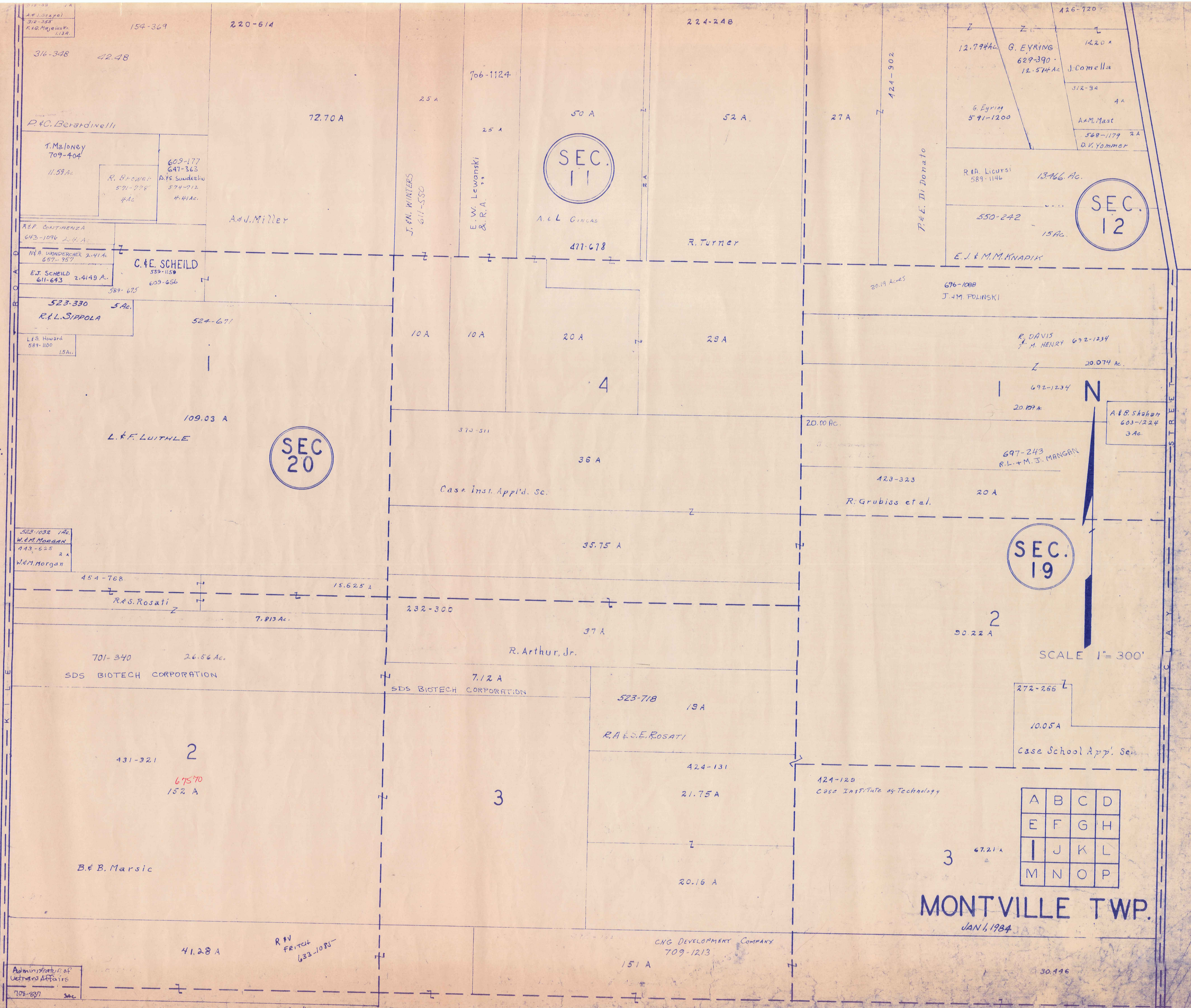
SCALE 1" = 300'

Jan. 1, 1984

A	B	C	D
E	F	G	H
I	J	K	L
M	N	O	P

MONTVILLE TWP

H A M B D E N T O W N S H I P



A. J. Lopez
312-353
R. G. Majewski
1132

316-348 42.48

R. & C. Berardinelli

T. Maloney
709-404
11.59 Ac.

R. & E. Rosati
571-228
4 Ac.

609-177
647-363
A. F. Souders
574-712
H. H. Ac.

A. J. Miller

R. P. CONTINENZA
643-1096
2.4 Ac.

M. A. WANDERHEA
697-757
2.41 Ac.

E. J. SCHEILD
611-643
2.4149 Ac.

C. E. SCHEILD
559-1159
609-656

523-330 5 Ac.
R. L. SIPPOLA

L. F. Howard
589-1100
1.5 Ac.

109.03 A
L. F. LUTHE

SEC 20

523-1032 1 Ac.
W. M. MORGAN
443-625 2 Ac.
W. M. Morgan

454-768

R. & S. Rosati

7.813 Ac.

701-340 26.56 Ac.
SDS BIOTECH CORPORATION

431-321 2
67570
152 A

B. & B. Marsic

41.28 A

R. W. Fritch
633-1085

Administrative or
Utilities Affairs
705-830 3 Ac.

SEE PG. 11

154-369

220-614

72.70 A

2.5 A

706-1124

2.5 A

E. W. Lewanski
& R. A.

SEC 11

A. & L. GINGAS

477-678

224-248

52 A

R. Turner

27 A

124-902

426-720

12.794 Ac. G. EYRING
629-390
12.514 Ac. J. Comella

14.20 A

3/2-94

4 A

A. M. Mast

568-1179 2 A
D. V. Yommer

R. A. LICURSI
589-1146

13.466 Ac.

550-242

15 Ac.

SEC 12

E. J. & M. M. KNAPIK

20.19 Acres

696-1088
J. M. POLINSKI

10 A

10 A

20 A

29 A

4

R. DAVIS
J. M. HENRY 692-1234

20.074 Ac.

692-1234

20.19 Ac.

A. & B. SHARON
603-1224
3 Ac.

370-511

20.00 Ac.

36 A

Case Inst. Appl'd. Sc.

697-243
R. L. & M. J. MANGAN

423-323

20 A

R. Grubiss et al.

SEC 19

35.75 A

50.22 A

232-300

37 A

R. Arthur, Jr.

7.12 A
SDS BIOTECH CORPORATION

523-718 19 A

R. & S. E. ROSATI

424-131

21.75 A

20.16 A

124-129
Case Institute of Technology

272-266

10.05 A

Case School App'l. Sci.

A	B	C	D
E	F	G	H
I	J	K	L
M	N	O	P

3 67.21 A

MONTVILLE TWP.

JAN 6, 1984

CNG DEVELOPMENT COMPANY
709-1213

151 A

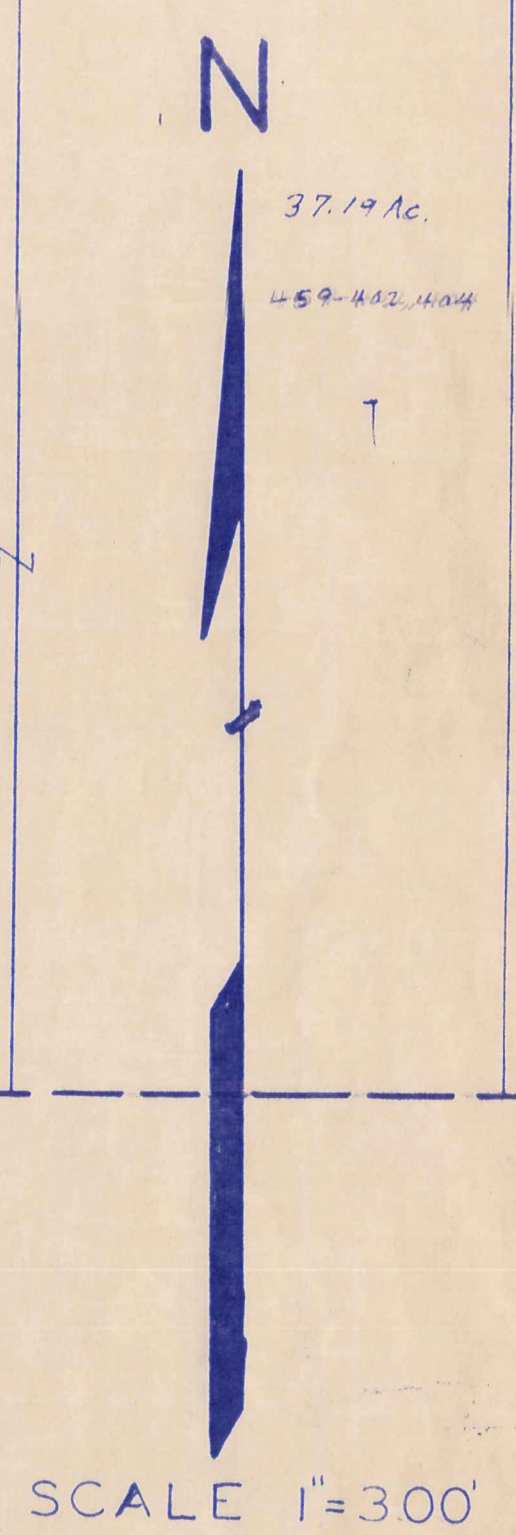
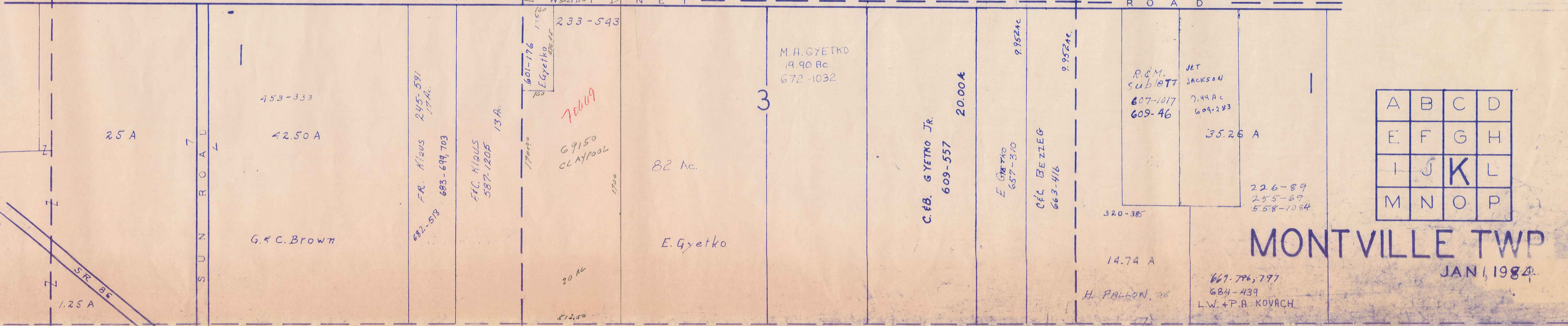
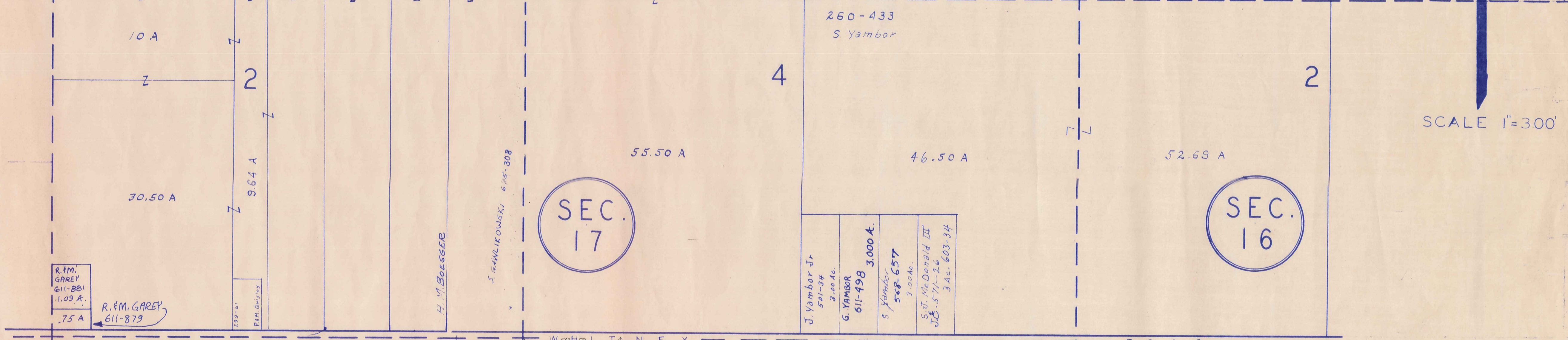
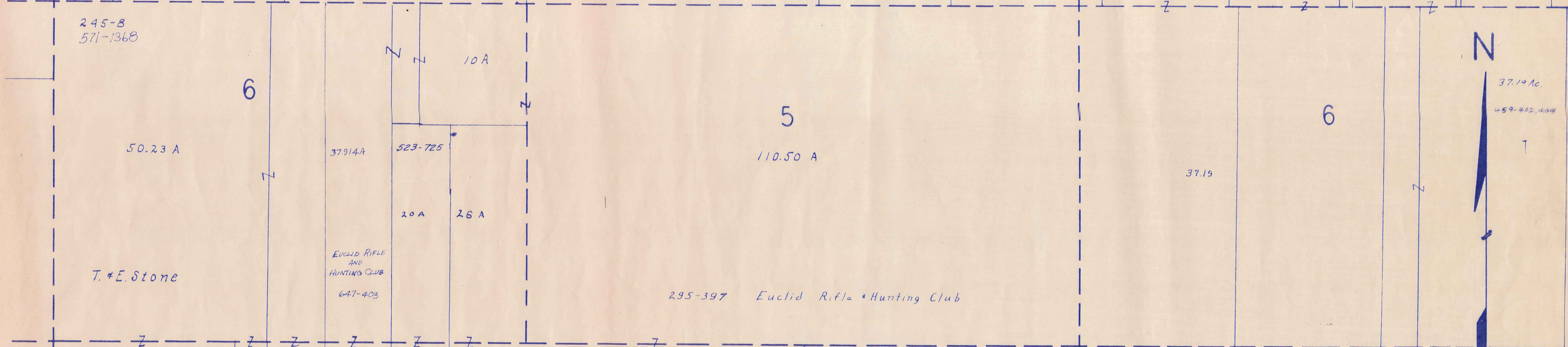
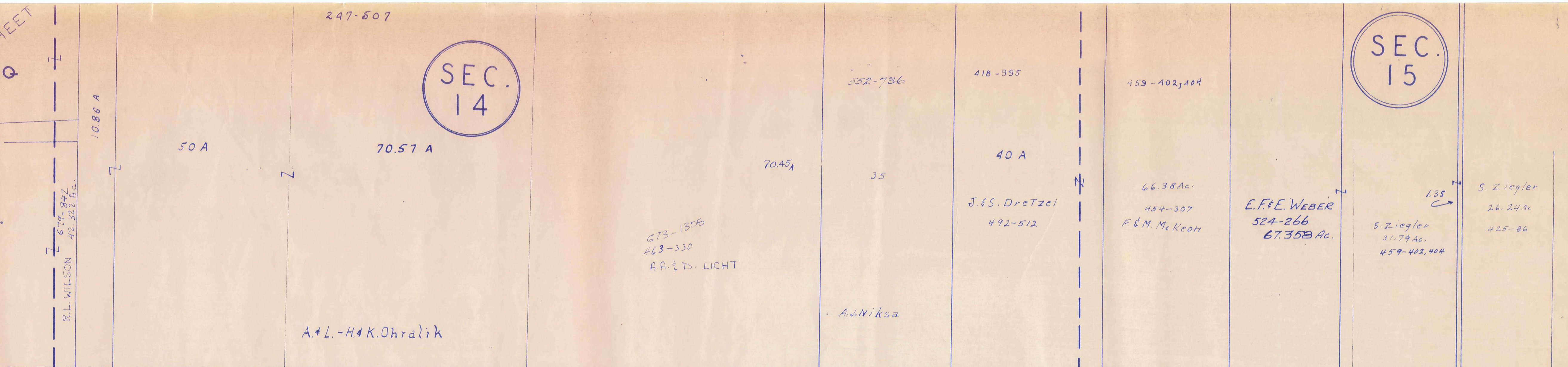
30.446

SEE
DETAIL SHEET
10 Q

247-507

SEC.
14

SEC.
15

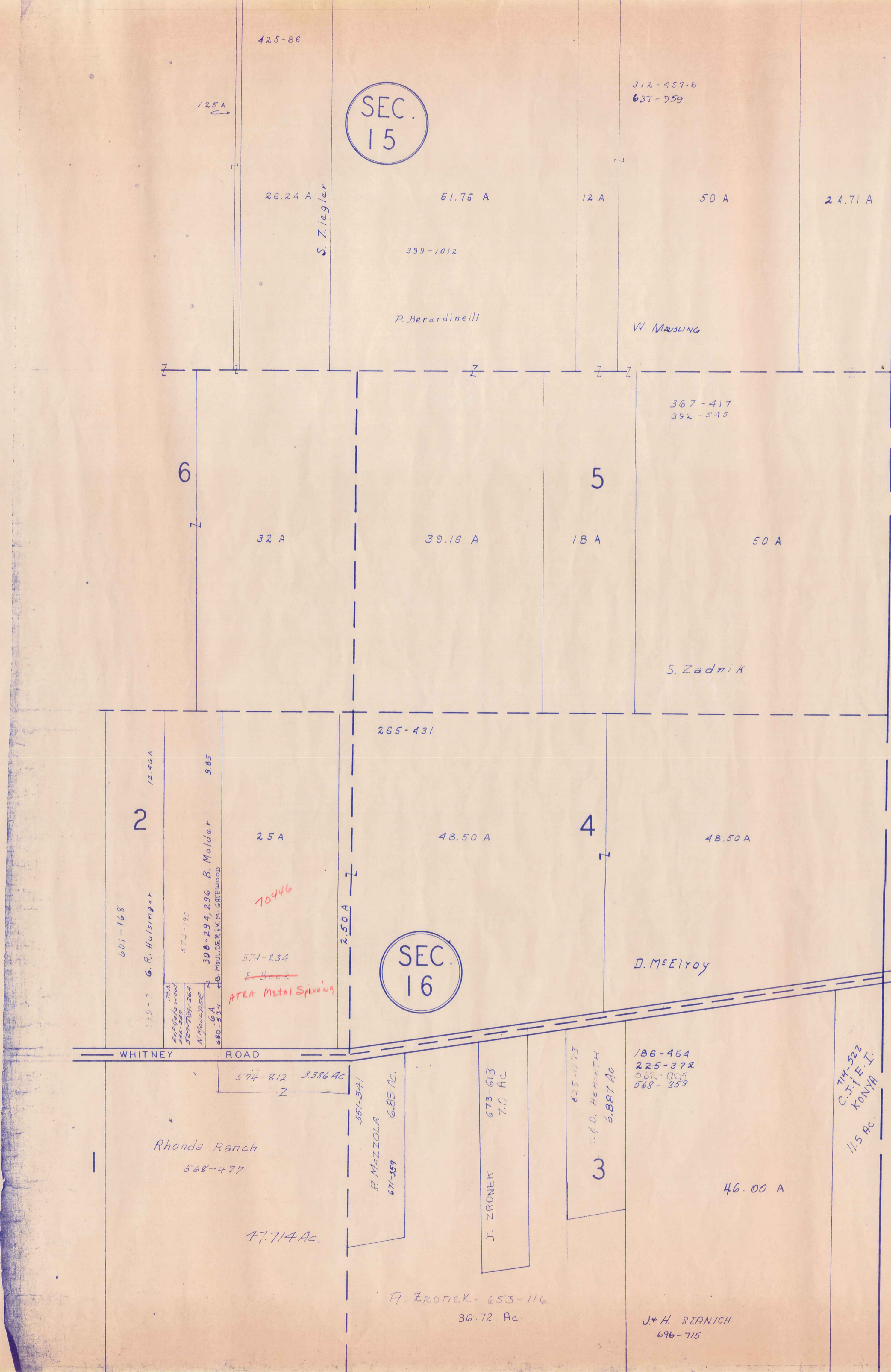


SEC.
17

SEC.
16

A	B	C	D
E	F	G	H
I	J	K	L
M	N	O	P

MONTVILLE TWP
JAN 1, 1984



A S H T A B U L A C O U N T Y

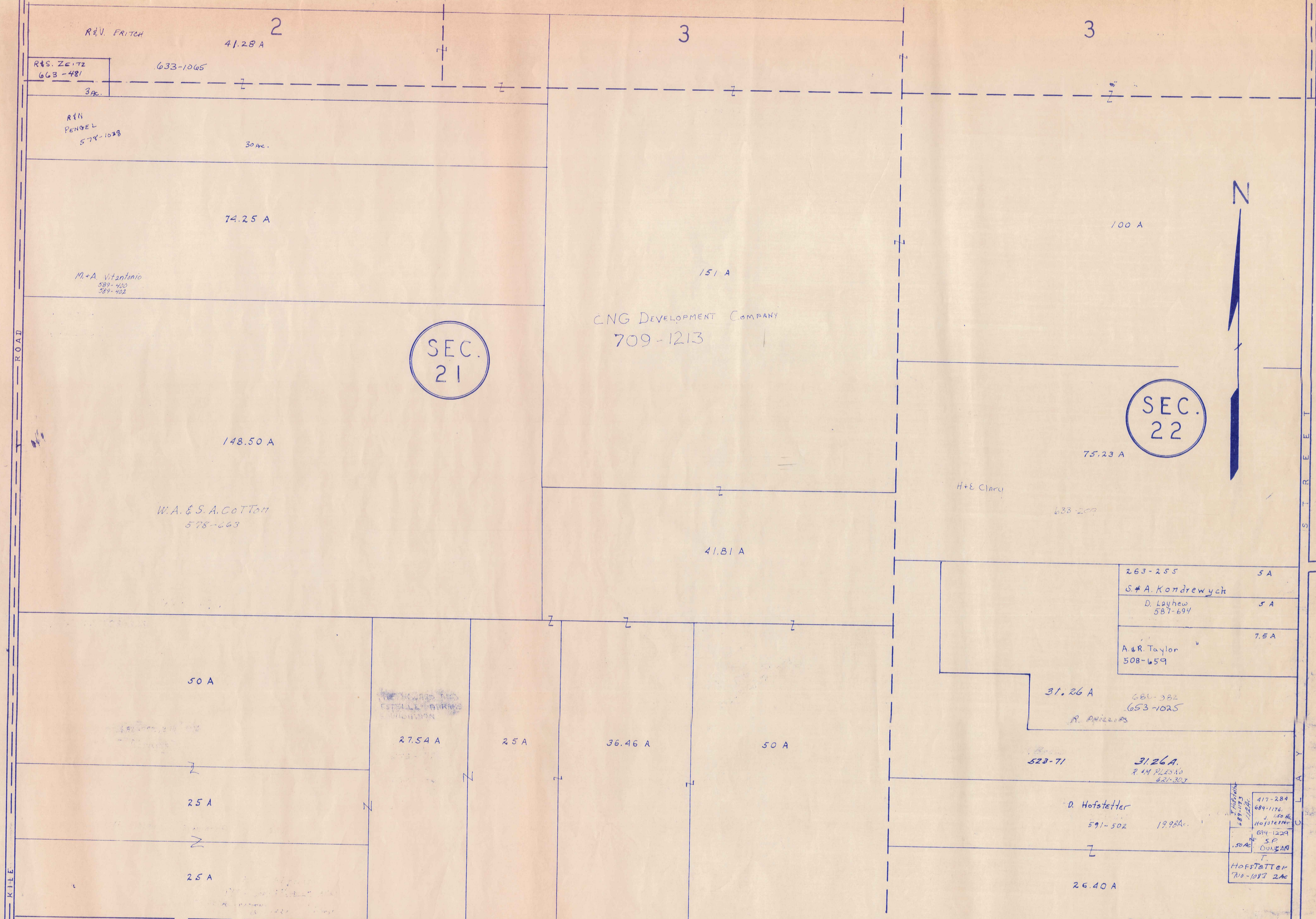


SCALE 1"=300'
Jan 5, 1984

A	B	C	D
E	F	G	H
I	J	K	L
M	N	O	P

MONTVILLE TWP.

H A M B D E N T O W N S H I P



SEC. 21

SEC. 22



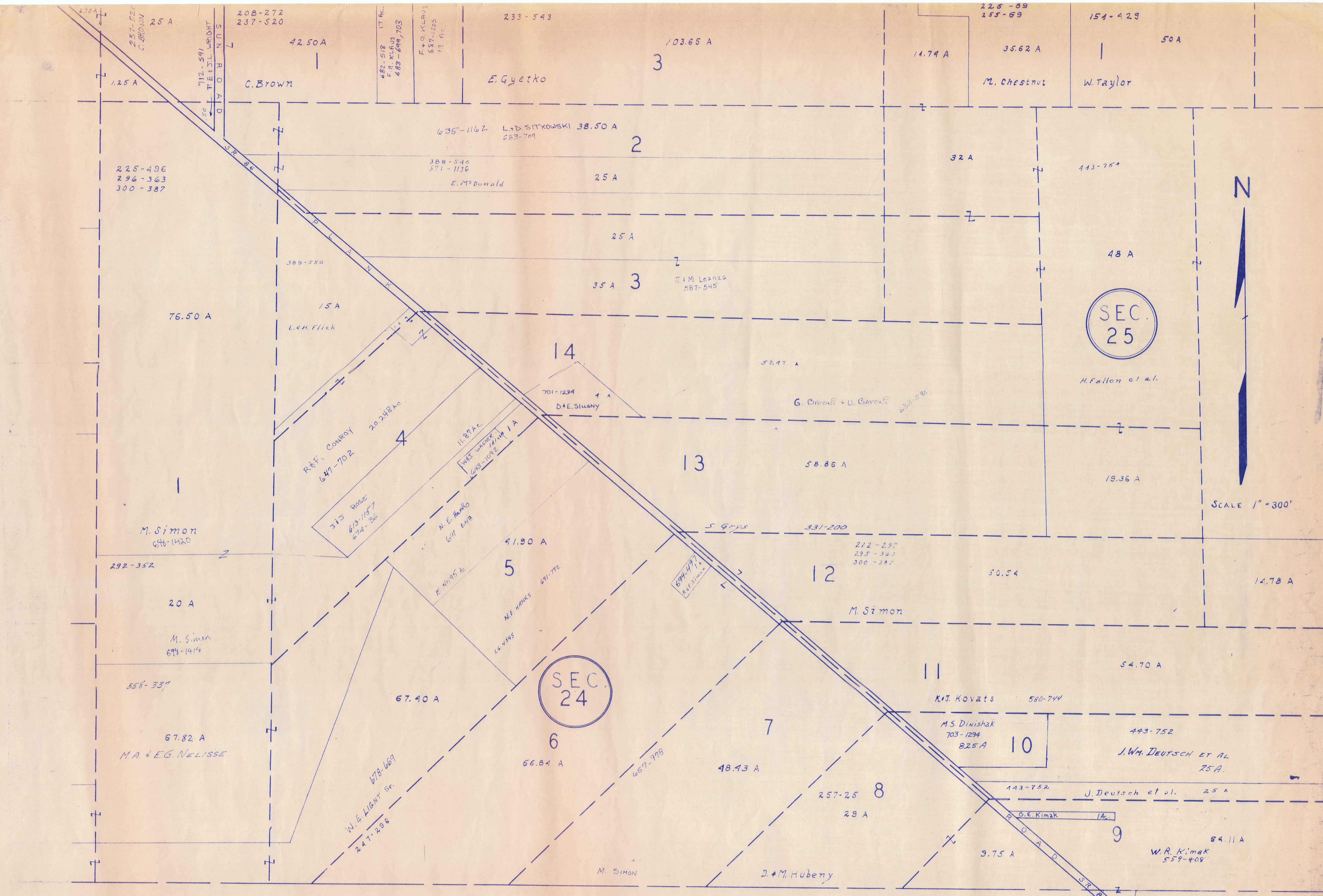
SCALE 1"=300'

H U N T S B U R G T O W N S H I P

A	B	C	D
E	F	G	H
I	J	K	L
M	N	O	P

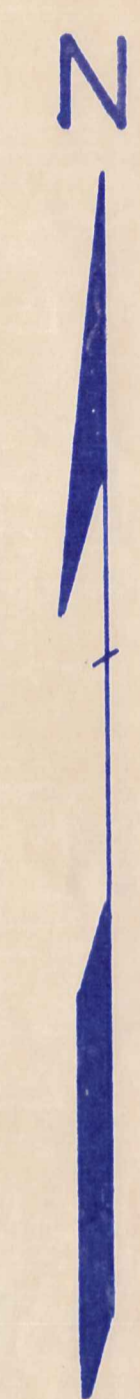
Jan. 1, 1984

MONTVILLE TWP



SEC.
25

SEC.
24



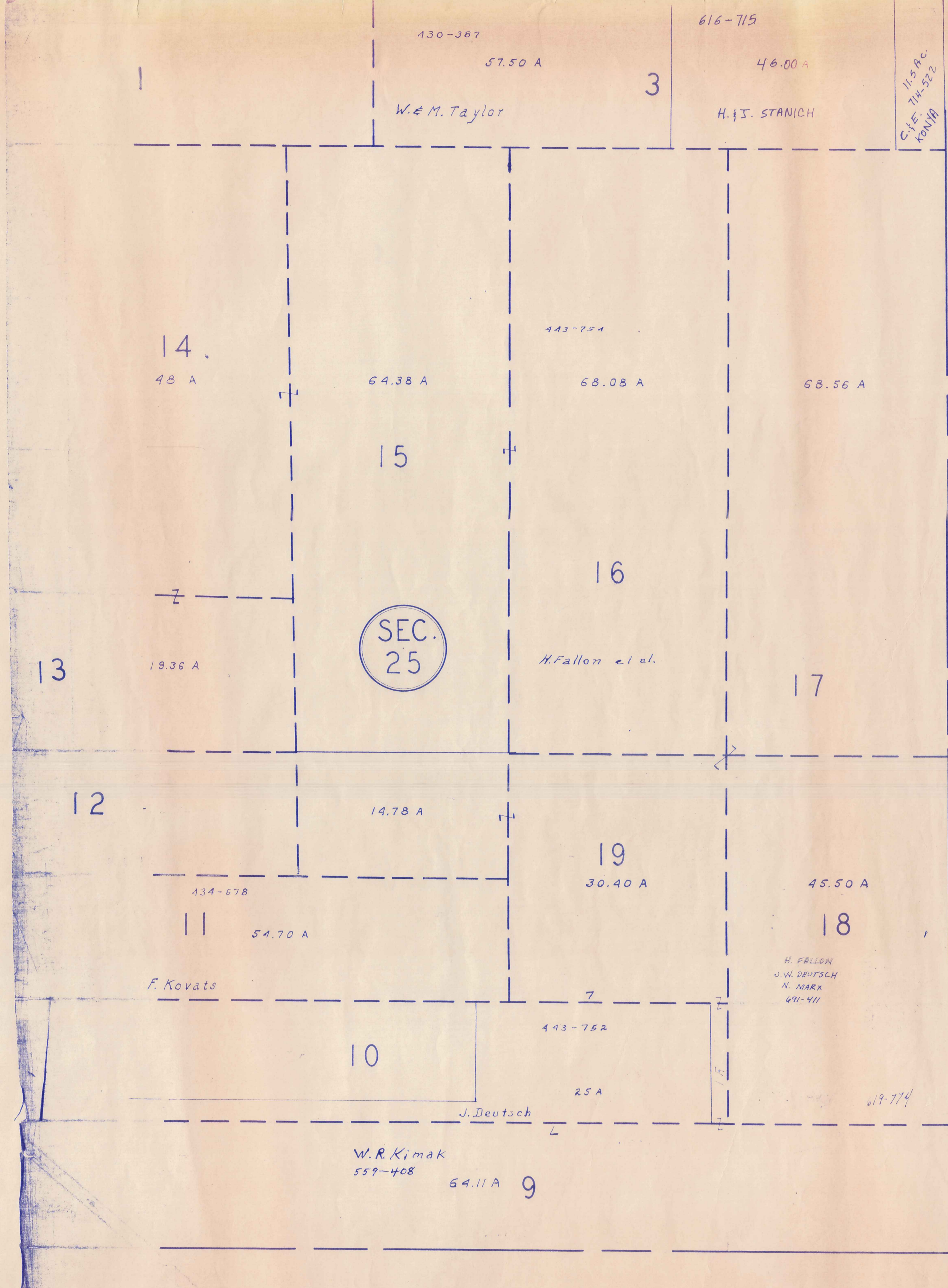
SCALE 1" = 300'

H U N T S B U R G T O W N S H I P

A	B	C	D
E	F	G	H
I	J	K	L
M	N	O	P

SCALE 1" = 300'
JAN 1, 1984

MONTVILLE TWP



A
S
H
T
A
B
U
L
A
C
O
U
N
T
Y

H
U
N
T
S
B
U
R
G
T
W
P.



SCALE 1" = 300'

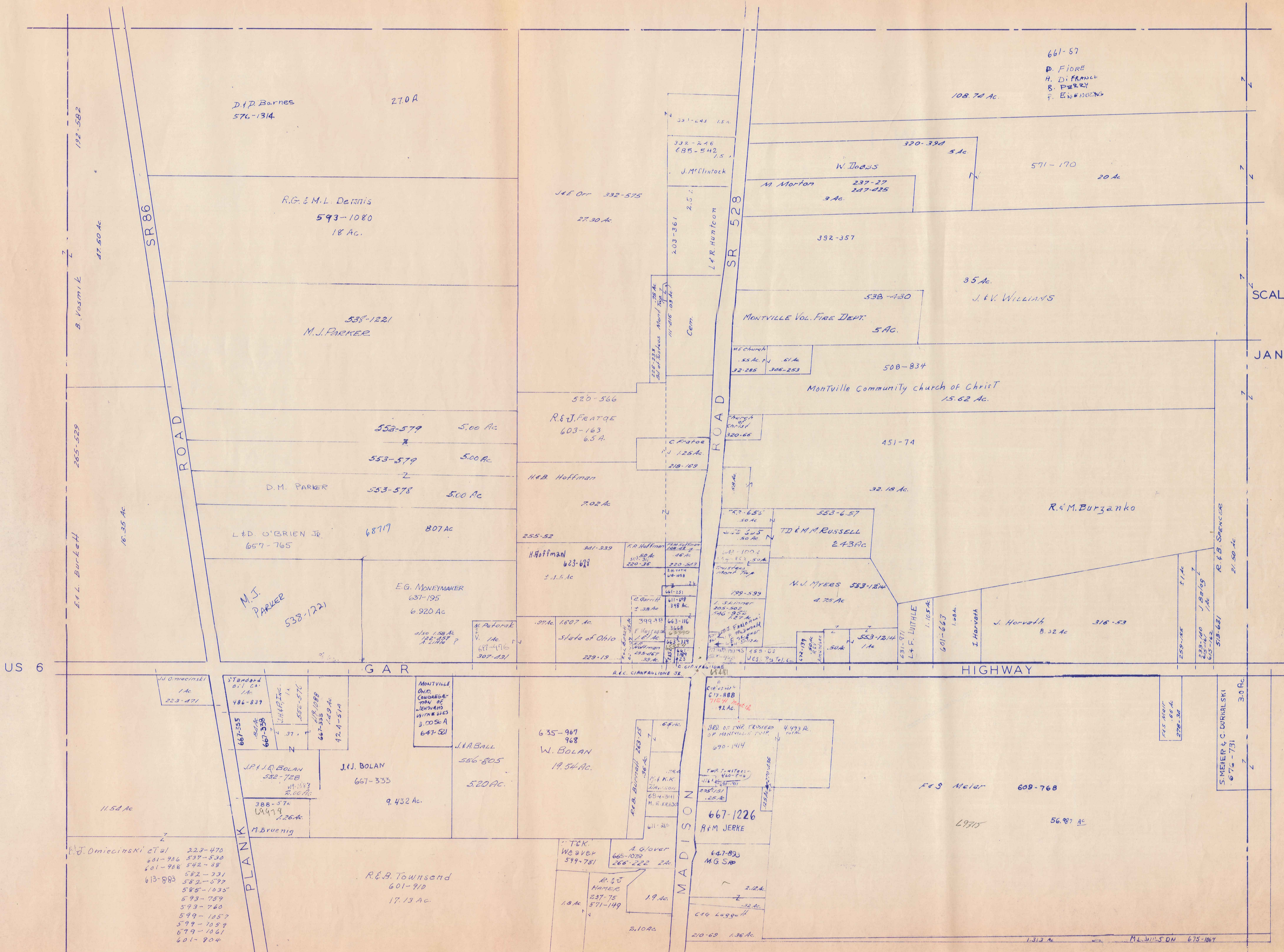
JAN 1, 1984

A	B	C	D
E	F	G	H
I	J	K	L
M	N	O	P

MONTVILLE TWP

MONTVILLE SECTION 13

TWP



661-57
D. Fiore
H. Di Franco
B. Parry
T. E. Williams

D.P. Barnes
576-1314
27.0 A

R.G. & M.L. Dennis
593-1080
18 Ac.

538-1221
M.J. PARKER

552-579 5.00 Ac

553-579 5.00 Ac

D.M. PARKER
553-578 5.00 Ac

L & D. O'BRIEN JR
657-765 807 Ac

M.J. PARKER
538-1221

E.G. MONEYMAKER
637-195
6.920 Ac

H. Hoffman
623-678
2.1.5 Ac

State of Ohio
229-19

W. BOLAN
19.54 Ac.

R.E.B. Townsend
601-910
17.13 Ac.

667-1226
R.F.M. JERKE

F.S. Meier
609-768

56.987 Ac

US 6

GAR

HIGHWAY

PLANK

MADISON

192-582

47.50 Ac

B. Vasnik

265-529

16.35 Ac

E.L. Burkett

11.54 Ac

M.J. Omiecinski et al
223-470
601-916 537-530
601-908 542-88
613-883 582-231
582-577
585-1035
593-759
593-760
599-1057
599-1059
599-1061
601-904

Standard Oil Co.
486-837
667-355
667-356
J.H. & J. INC.
552-57C
667-1088
667-335
129 Ac
42.4-51.4

J.P. & J. BOLAN
532-728
388-574
14974
2.26 Ac
M. Bruenig

J.I. BOLAN
667-353
9.432 Ac.

MONTVILLE
CHURCH
CONGREGA-
TION OF
MEMBERS
WITHIN THE
3.0056 A
647-581

J. & B. BALL
556-805
5.20 Ac.

T.K. Weaver
599-781
665-1052
266-222 2A
B.S. HAMER
237-75
571-149
1.9 Ac
2.10 Ac

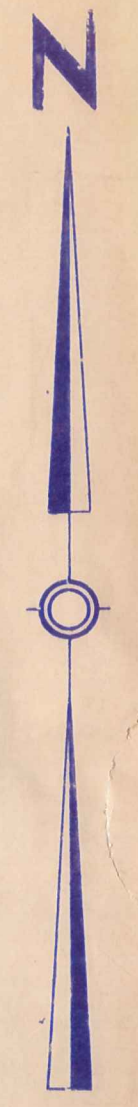
663-116
358
663-119
663-120
663-121
663-122
663-123
663-124
663-125
663-126
663-127
663-128
663-129
663-130
663-131
663-132
663-133
663-134
663-135
663-136
663-137
663-138
663-139
663-140
663-141
663-142
663-143
663-144
663-145
663-146
663-147
663-148
663-149
663-150
663-151
663-152
663-153
663-154
663-155
663-156
663-157
663-158
663-159
663-160
663-161
663-162
663-163
663-164
663-165
663-166
663-167
663-168
663-169
663-170
663-171
663-172
663-173
663-174
663-175
663-176
663-177
663-178
663-179
663-180
663-181
663-182
663-183
663-184
663-185
663-186
663-187
663-188
663-189
663-190
663-191
663-192
663-193
663-194
663-195
663-196
663-197
663-198
663-199
663-200

663-116
358
663-119
663-120
663-121
663-122
663-123
663-124
663-125
663-126
663-127
663-128
663-129
663-130
663-131
663-132
663-133
663-134
663-135
663-136
663-137
663-138
663-139
663-140
663-141
663-142
663-143
663-144
663-145
663-146
663-147
663-148
663-149
663-150
663-151
663-152
663-153
663-154
663-155
663-156
663-157
663-158
663-159
663-160
663-161
663-162
663-163
663-164
663-165
663-166
663-167
663-168
663-169
663-170
663-171
663-172
663-173
663-174
663-175
663-176
663-177
663-178
663-179
663-180
663-181
663-182
663-183
663-184
663-185
663-186
663-187
663-188
663-189
663-190
663-191
663-192
663-193
663-194
663-195
663-196
663-197
663-198
663-199
663-200

667-1226
R.F.M. JERKE

667-1226
R.F.M. JERKE

667-1226
R.F.M. JERKE



SCALE 1" = 200'

JAN. 1, 1984